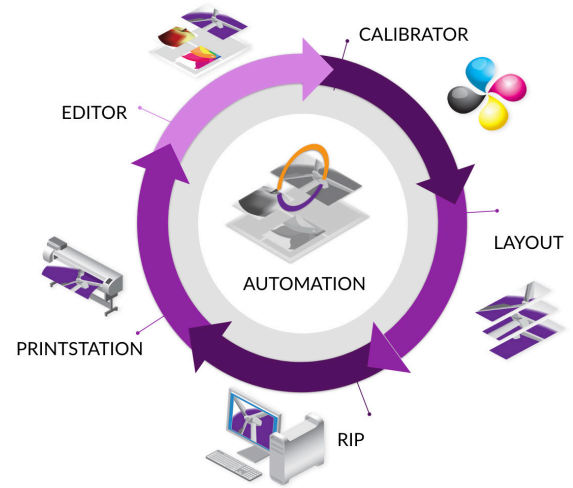




BETTER PRINTING, BETTER PROFITS

The complete **RIP-based workflow**  
with tools that **prepare work faster**  
and **more accurately** than any other  
system on the market

**PRINTFACTORY IS A  
COMPLETE SUITE OF  
RIP-BASED, WIDE  
FORMAT WORKFLOW  
TOOLS THAT DO MAKE  
A DIFFERENCE AND YOU  
CAN AFFORD**



*"We've got consistent color, zero color drift, lower costs, greatly improved staff morale, and our output is up by 25%. That's all directly linked to PrintFactory workflow software."*

**SEAN GUEGAN, MD, SIGNTECH**

Consistent color printing on every printer, everywhere, every time ✓

Device-link profiles for better color, same quality but 20%+ less ink ✓

Intelligent 'last minute' nesting that reduces media spend instantly ✓

Easy 3-step profile wizards and a best-in-class in-app editor ✓

The fastest, most-intelligent RIP on the market today ✓

Centralised control over all of your devices from one point ✓

Workflow software made  
by printers, for printers



Supported by a technical team  
who understand your work



Compatible with complex MacOS /  
Windows / Linux networks



Works with more than 2,000+  
printers and cutters



Pay monthly, pay annually, or  
buy as a one-off purchase



Handles high-street print and lights-  
out, Industry 4.0 production



**START MAKING  
MORE MONEY TODAY  
PRINTFACTORY  
PAYS FOR ITSELF WITH  
SMART TOOLS THAT  
SAVE INK, MEDIA, AND  
TIME ~ INSTANTLY**

*“With PrintFactory, there’s no time lost troubleshooting. And we’ve had fantastic feedback from our customers since we’ve introduced the software.”*

**CARLA RENNINGS, STUDIO DIR. ARTEX**



## THE IDEAL 6-IN-1 SYSTEM

- **CONSISTENT COLOR**
- **LOWER INK COSTS**
- **SMARTER JOB PREP**
- **LESS WASTED MEDIA**
  
- **CENTRALISED CONTROL**
- **FASTER PRODUCTION**
- **HIGHER QUALITY COLOR**
- **SPECIALIST INK TOOLS**
- **SMART/MANUAL LAYOUTS**
- **COLOR CERTIFICATION**
- **REPORTING/DASHBOARDS**
- **SEAMLESS API INTEGRATION**
- **XML-DRIVEN**
- **UNLIMITED INSTALLS**
- **CLOUD BACK-UPS**

## PRINTFACTORY'S RIP



**Centralised control** over every printer and cutter, everywhere in your business. **Unlimited installs.** The cloud-based PrintFactory RIP is XML-driven for a faster, more accurate, more productive workflow.

## LAYOUT



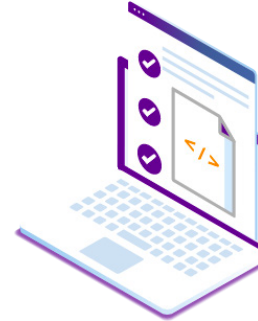
The all-in-one tool. Every type of **smart nesting** you can imagine, with **total manual control**. Step-and-repeat. Double sides. Finishing tools. Contour management. Spot colour assignment and more.

## EDITOR



Make **last minute corrections** or **major changes**. This advanced pre-press tool has all the **easy-to-use design features** you need to amend almost any file, tile, template, and speed up your production.

## PRINTSTATION



**Load balancing** with confidence. A spooler that 'opens up' your printer's functionality and gives you a simple interface to get hands-on, **preparing multiple jobs** at the same time with consistent color guaranteed.

## CALIBRATOR



3-step wizards for **device-link profiles** that guarantee consistent color on every device, anywhere, all of the time. **Save ink** from day one with **no loss in quality**. Supporting most spectros. Proof certification.

## JUST-IN-TIME NESTING



Make **smart changes** and **manual adjustments** to your jobs right up to the last second, **without slowing down your production**. Optimal nesting solutions mean less waste guaranteed. Better printing, better profits...



**PRICING FOR THE  
DRIVERS/DEVICES YOU  
ACTUALLY USE. ANNUAL  
PLANS, MONTHLY PLANS,  
OR ONE-OFF PURCHASE  
~ YOU DECIDE**



PrintFactory FOCUS is our basic level plan. With ICC and device-link profiling included, you'll get the Editor, Calibrator, and Layout tools, plus support for roll-to-roll cutters and queue-based automation. FOCUS is ideal for smaller businesses such as signmakers or midweight large format printers.



PrintFactory AUTOMATION is ideal for MIS/ERP / Industry 4.0 ready systems, lights-out production, and industrial-sized operations. AUTOMATION includes full integration with Web-2-Print, a deadline-centric workflow that includes dynamic job scheduling, bi-directional API integration, and unlimited scalability.



**CLOUD-BASED WORKFLOW SOFTWARE  
THAT GROWS WITH YOUR BUSINESS**



PrintFactory PRODUCTION is ideal for larger remote setups with multiple Editor installations, multiple printers and cutters, and (if you want them) multiple RIPs ~ all centrally controlled. Dashboard reporting. Scalable workflows. PRODUCTION improves print quality and starts saving ink and media instantly.



WORLDWIDE SUPPORT FROM A TEAM THAT WORKS THE SAME WAY YOU DO



**BY PRINTERS, FOR PRINTERS**

- **THE RIGHT TOOLS**
  - **THE RIGHT TEAM**
  - **THE RIGHT SUPPORT**
  - **THE RIGHT PRICE**
- 
- **100% INDEPENDENT**
  - **GLOBAL NETWORK**
  - **SPECIALIST COLOR EXPERTISE**
  - **TECHNICAL HELPDESK**
- 
- **INDUSTRIAL APPLICATIONS**
  - **BI-DIRECTIONAL API**
  - **WEB2PRINT INTEGRATION**
  - **MIS / ERP CONNECTIVITY**
  - **INDUSTRY 4.0 COMPLIANT**
  - **TEXTILE SPECIALISTS**

Do you want consistent color, everywhere, all of the time? Do you need smarter **RIP-based workflow software** with tools that **prepare work faster** and **more accurately**? Can you imagine a production workflow that **saves time, media, ink, and money - every day?**



**BETTER PRINTING, BETTER PROFITS**

PrintFactory  
De Biezen 5  
5735 SM  
Aarle-Rixtel  
The Netherlands

T: +31 40 30 20 009  
sales@printfactory.cloud

GMG Americas  
120 Industrial Park Rd.  
Hingham,  
MA 02043  
USA

T: +1 781 740 4077  
infoamericas@gmgcolor.com

PrintFactory  
5738 Marina View  
Asia Square Tower 1,  
Level 07-04  
Singapore 018960

T: +65 6407 1190  
asia@printfactory.cloud

Aurelon China  
/ 奥热龙中国  
上海浦东新区锦绣东路  
1999号707室

T: +86 21 61100160  
china@printfactory.cloud